

Technical Parameter

Type	AXE-B11	AXE-B17	
Laser source	11 blue laser crosses (+1 extra blue laser line)	17 blue laser crosses (+1 extra blue laser line)	
Deep hole scanning	Support		
Accuracy	0.020 mm		
Measurement rate	1,300,000 measurements/s	2,000,000 measurements/s	
Scanning area	550 mm × 600 mm	860 mm × 600 mm	
Scanning area (photogrammetry)	Standard configuration	Built-in	
	Scanning area	2500 mm x 3000 mm	3760 mm × 3150 mm
	Depth of field	2500 mm	
Laser class	CLASS II (eye-safe)		
Resolution	0.025 mm		
Volume accuracy	Work alone	0.020 mm + 0.035 mm/m	0.020 mm + 0.030 mm/m
	Work with 1m reference bar	0.020 mm + 0.020 mm/m	
	Work with MSCAN-L15	0.020 mm + 0.015 mm/m	
Stand-off distance	300 mm		
Depth of field	500 mm		
Output formats	.stl, .ply, .obj, .igs, .wrl, .xyz, .dae, .fbx, .ma, .asc or customized		
Operating temperature range	-10~40°C		
Interface mode	USB 3.0		
Patents	CN204329903U, CN104501740B, CN104165600B, CN204988183U, CN204854633U, CN204944431U, CN204902788U, CN105068384B, CN105049664B, CN204902784U, CN204963812U, CN204902785U, CN204902790U, CN106403845B, CN209197685U, CN209263911U, CN206905709U, CN107202554B, US20200225030A1, US10309770B2, KR102096806B1		

SCANTECH™

AXE - B17 3D Scanner

Measuring An Ultra-wide 3D world

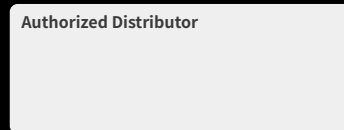


SCANTECH (HANGZHOU) CO., LTD

Building 12, No.998, West Wenyi Road, Yuhang District, Hangzhou,
Zhejiang Province, China
Tel: 0086-571-85852597 Fax: 0086-571-85370381
E-mail: info@3d-scantech.com
Website: www.3d-scantech.com

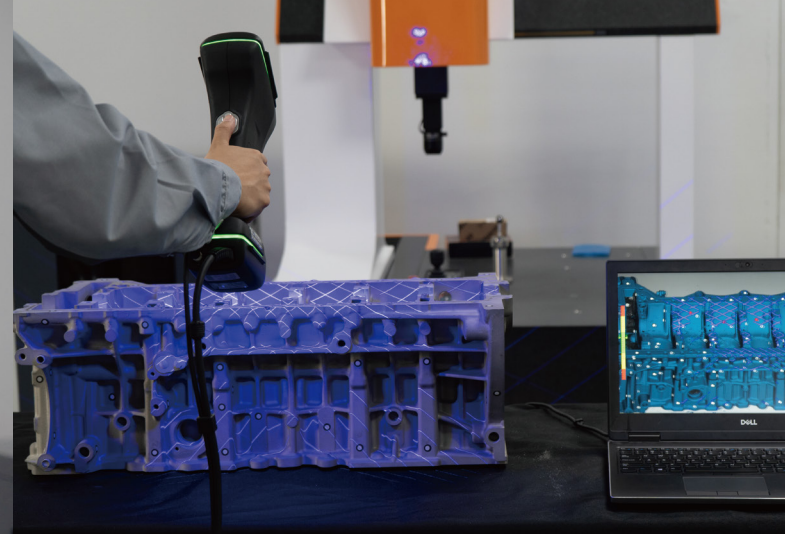
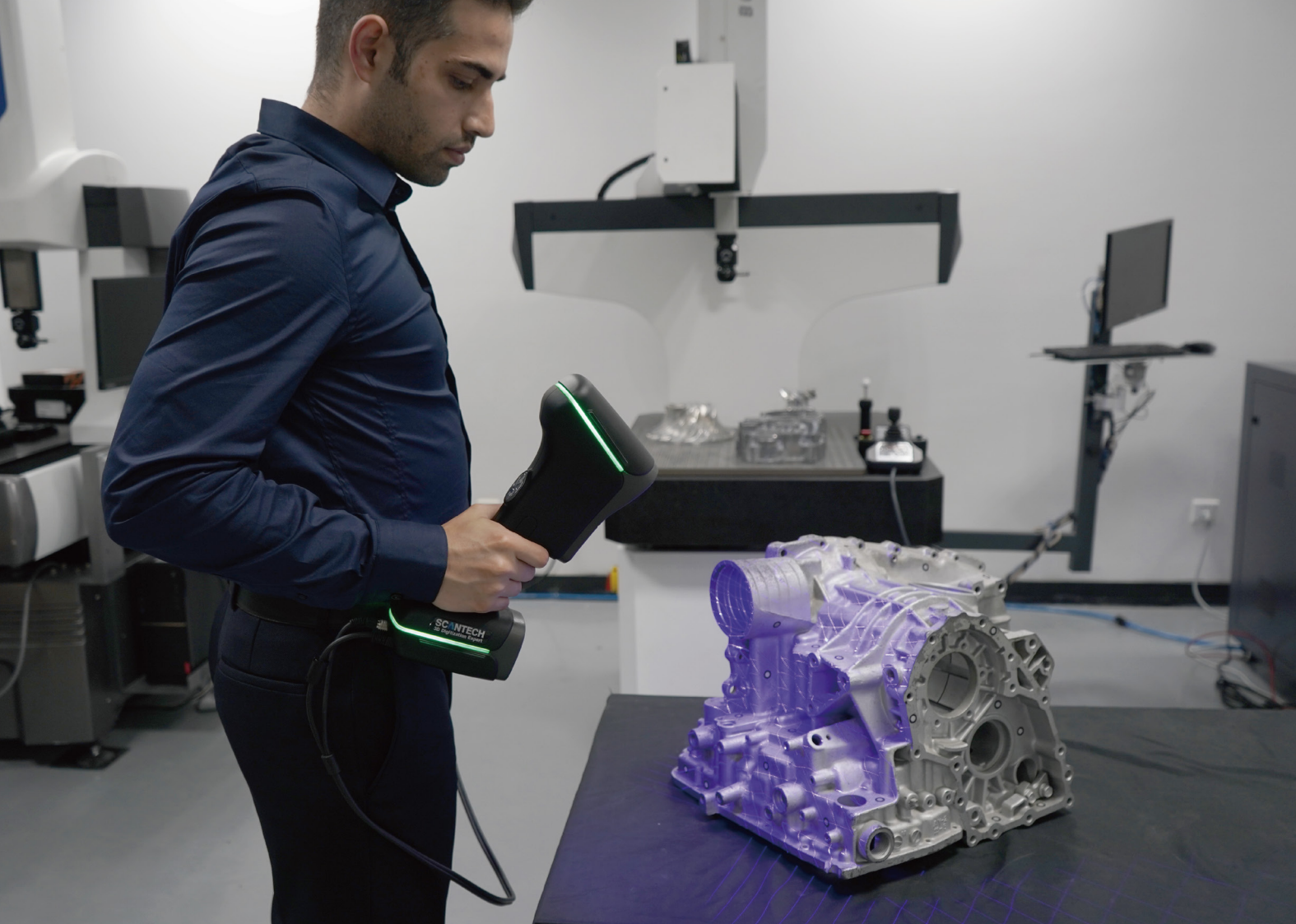
SCANTECH™

Authorized Distributor



Copyright ©

SCANTECH (HANGZHOU) CO., LTD



Extreme-fast Response

17 crossed blue laser lines enable extreme fast and precise response with 2,000,000 measurements/s, offering extraordinary work efficiency.



Flexible Switching

Working modes are capable of freely switching based on scanning needs: efficient unrivaled-speed scanning; accurate deep hole scanning, dealing with intricate positions like deep holes and dead angles.

AXE-B17 3D scanner utilizes optical measurement technology with a scanning speed of 2,000,000 measurements/s, quickly capturing 3D data of the object and getting precise deviations on the geometric surface.

With global initiative built-in photogrammetry system, AXE-B17 outputs ultra-large scanning area and metrology-grade measurement accuracy. Getting rid of limitations like size, shape, material and complexity of the object, AXE-B17 can freely choose working modes of efficient unrivaled-speed scanning and accurate deep hole scanning. It generates high precision 3D inspection of medium to large-sized projects without the aid of extra devices.



Unprecedented Patent

The global initiative built-in photogrammetry system is tailored for measuring medium to large-sized objects, with 0.030 mm/m of volumetric accuracy.



Ultra-wide Vision

Ultra-wide scanning area of 860 mm × 600 mm allows an optimal and smoother 3D scanning experience.